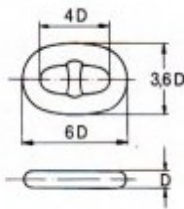


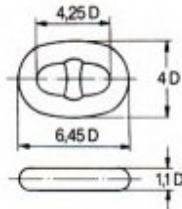
MEASUREMENTS FOR ANCHOR-CHAIN AND ACCESSORIES

Approximate Dimensions for Chain & Fittings
D = Nominal Diameter of Chain

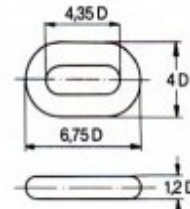
Common link



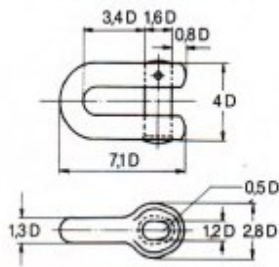
Enlarged link



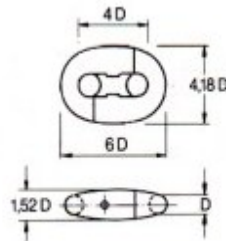
End link



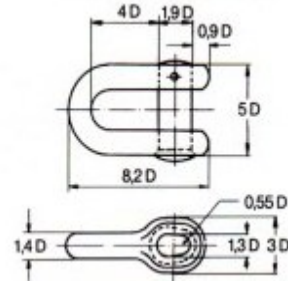
Joining shackle type D



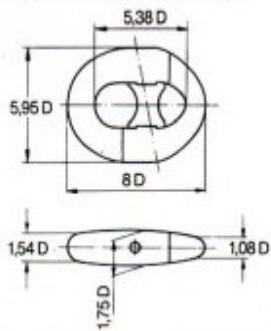
Joining shackle type Kenter



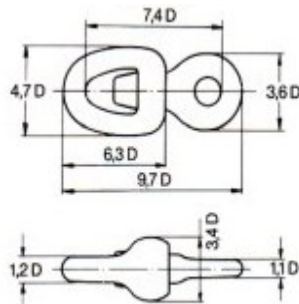
Anchor shackle type D



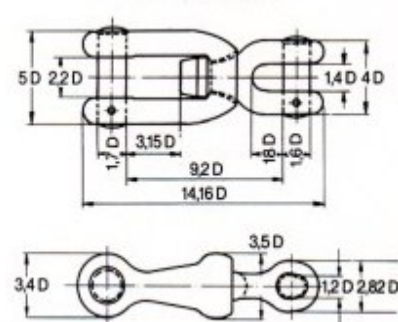
Anchor shackle type Kenter



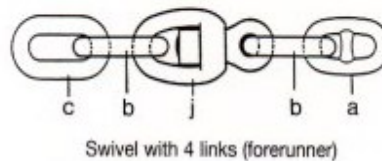
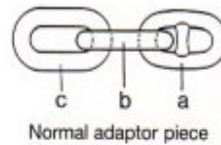
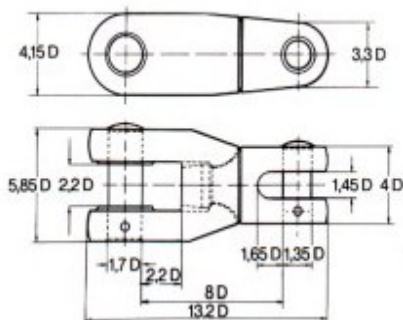
Swivel



Swivel shackle



Swivel shackle ASW



WEIGHT FOR STUDLINK ANCHOR-CHAINS AND ACCESSORIES

page 1 of 2

Dia. mm	Studlink anchor-chain Weights		Joining Shackle Kenter	Anchor Shackle Type D
	kgs/mtr	kgs/27,5 mtr	kgs/pc	kgs/pc
12.5	3.5	96	0.39	1.1
14	4.4	121	0.51	1.3
16	5.8	160	0.62	1.6
17.5	7.0	193	0.82	2.0
19	8.1	223	1.00	2.5
20.5	10.0	275	1.35	3.3
22	11.1	305	1.6	4.0
24	13.3	366	2.0	5.0
26	15.7	432	2.7	6.0
28	18.3	503	3.3	8.0
30	21.0	578	3.9	9.5
32	23.9	657	4.6	12.0
34	27.0	743	5.8	14.0
36	30.2	831	6.6	17.0
38	33.7	927	7.8	20.0
40	37.1	1020	9.1	23.0
42	40.5	1114	10.5	26.0
44	44.3	1218	12.2	29.0
46	48.5	1334	14.0	33
48	52.8	1452	16.0	37
50	57	15.68	18	41
52	62	1705	20	45
54	66	1815	20	50
56	71	1953	24	54
58	77	2118	28	65
60	83	2283	28	70
62	88	2420	33	76
64	94	2585	38	82
66	100	2750	38	94
68	107	2943	44	101
70	114	3135	44	108
73	124	3410	51	124
76	135	3713	58	141
78	142	3905	65	150
81	154	4235	74	171
84	166	4565	84	193
87	178	4895	94	218
90	189	5198	105	243
92	199	5473	105	256
95	211	5803	115	290
97	220	6050	135	305
100	234	6435	150	335
102	243	6683	150	350
107	266	7315	175	410
111	287	7893	200	445
114	304	8360	225	475
117	317	8718	225	505

122	345	9488	267	550
127	375	10313	315	600
132	400	11000	370	675
137	436	11990	390	750
142	467	12843	450	900
147	489	13723	505	1055
152	535	14713	545	1200
157	570	15675	605	1340
162	610	16775	660	1450

The measurements may vary between different factories. SEACAT- Schmeding can not be hold responsible for any deviate between this table and delivered equipment.

WEIGHT FOR STUDLINK ANCHOR-CHAINS AND ACCESSORIES

page 2

Dia mm	Common Link	Enlarged Link	End Link	Swivel
	kgs	kgs	kgs	kgs
12.5	0,17	0,23	0,23	0,9
14	0,24	0,32	0,36	1,3
16	0,36	0,50	0,51	1,7
17,5	0,47	0,74	0,68	2,1
19	0,60	0,88	0,89	2,5
20,5	0,75	1,10	1,13	3,1
22	0,93	1,25	1,28	3,5
24	1,21	1,70	1,77	5
26	1,55	2,15	2,20	6
28	1,9	2,8	2,9	7,5
30	2,4	3,2	3,3	9
32	2,9	3,9	4	11
34	3,4	4,7	5	13,5
36	4	5,5	5,9	16
38	4,7	6,1	6,8	19
40	5,5	7,1	8	23
42	6,4	8,4	9,6	27
44	7,4	10	11,2	32
46	8,5	11,5	13	37
48	9,8	13,1	15	44
50	11	15	17	57
52	13	17	20	57
54	14	19	22	67
56	16	21	23	67
58	17	23	25	80
60	19	25	27	95
62	21	28	30	95
64	23	31	34	112
66	25	34	38	130
68	27	37	42	130

SEACAT SCHMEDING

70	30	40	45	152
73	34	45	52	172
76	39	50	59	194
78	42	55	63	194
81	46	61	70	220
84	52	68	78	242
87	58	75	86	270
90	64	82	95	300
92	68	88	100	325
95	75	98	112	350
97	80	102	120	350
100	88	112	130	385
102	93	120	138	420
107	109	140	158	495
111	120	160	175	535
114	130	173	193	570
117	142	185	210	610
122	160	210	235	650
127	182	235	260	720
132	205	260	305	760
135	230	285	330	900
142	255	325	375	1100
147	280	395	410	1200
152	310	410	460	1400
157	345	455	510	1550
162	375	500	560	1700

The measurements may vary between different factories. SEACAT-Schmeding can not be hold responsible for any deviate between this table and delivered equipment.